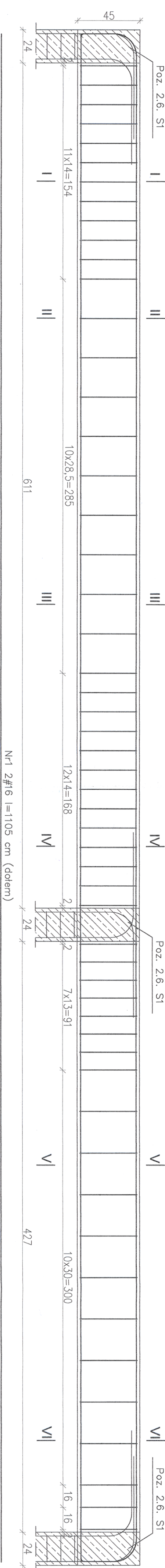
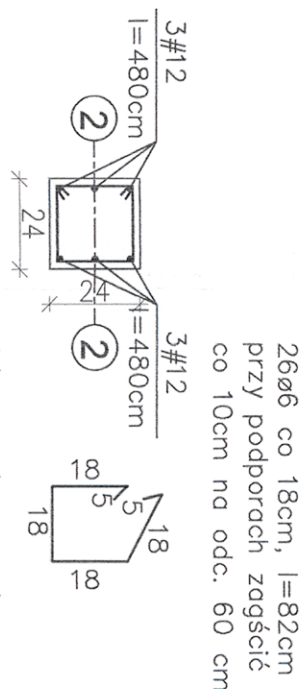


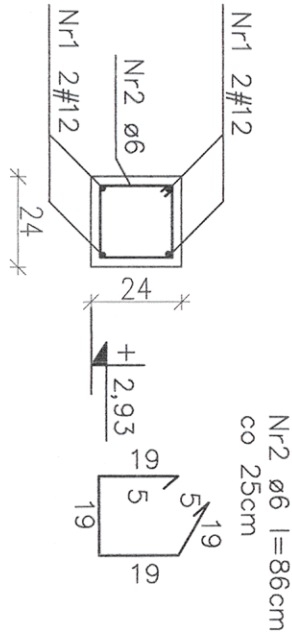
Poz. 2.3. Belka B1



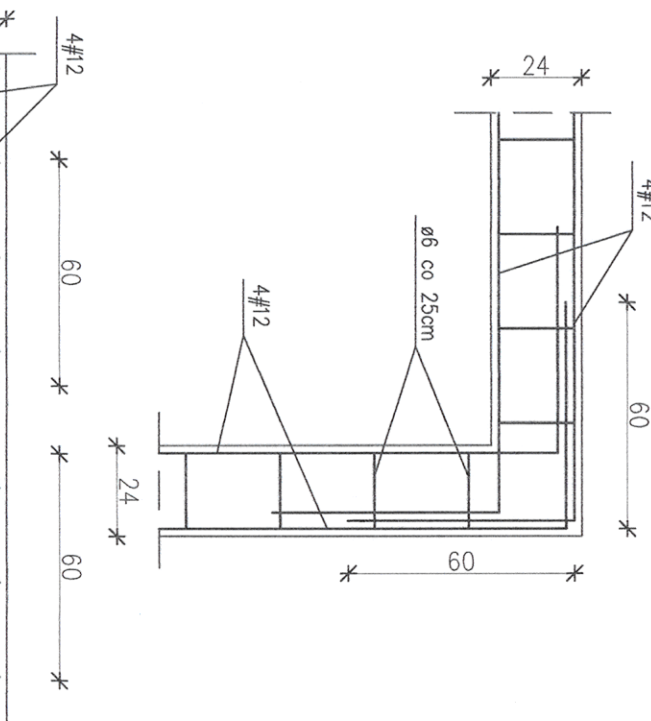
Poz. 2.6. Słupy S1 - 3 sztuki



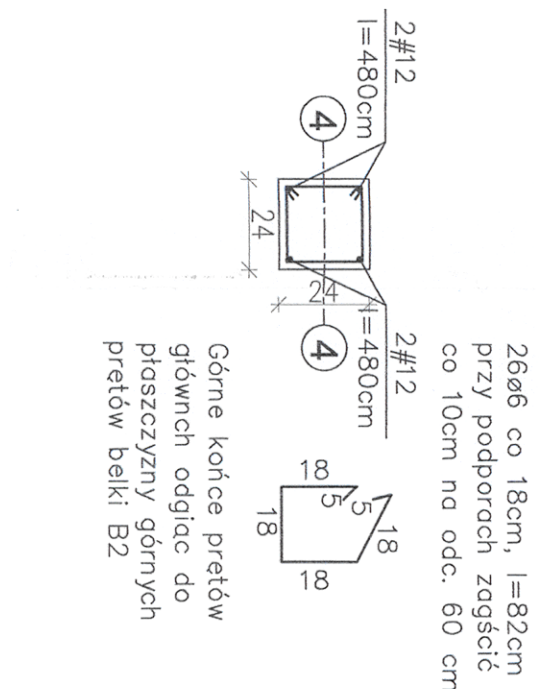
Poz. 2.9. Wieniec W1



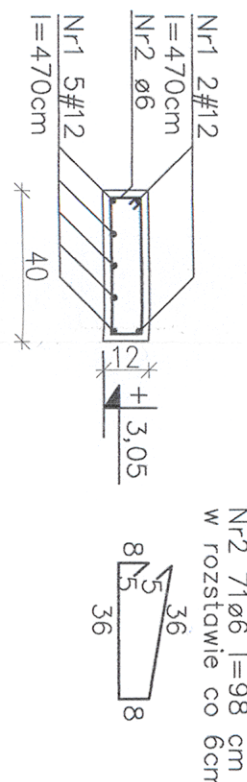
SPOSÓB ZBROJENIA NAROŻY WIENCÓW



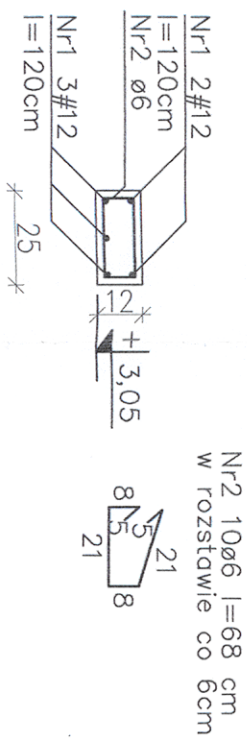
Poz. 2.7. Słupy S2 - 2 sztuki



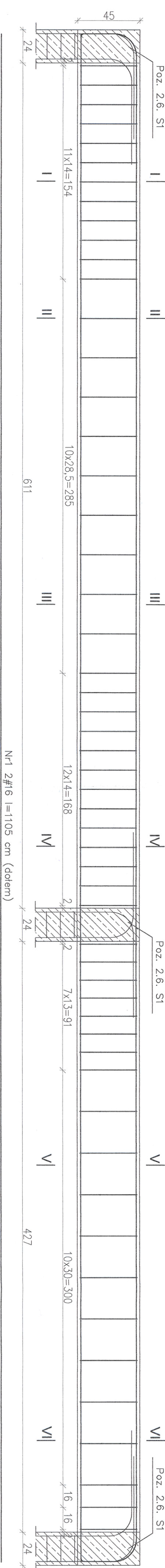
Poz. 2.9. Belka ukryta BU1



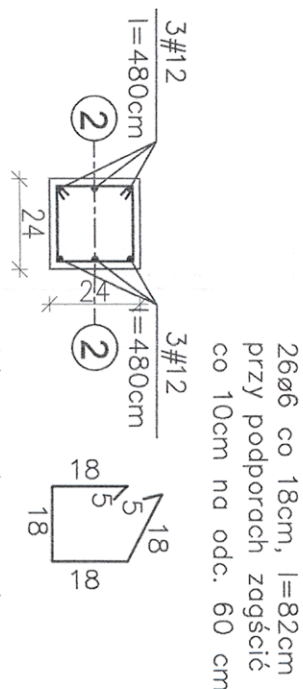
Poz. 2.10. Belki ukryte BU2 - 2 sztuki



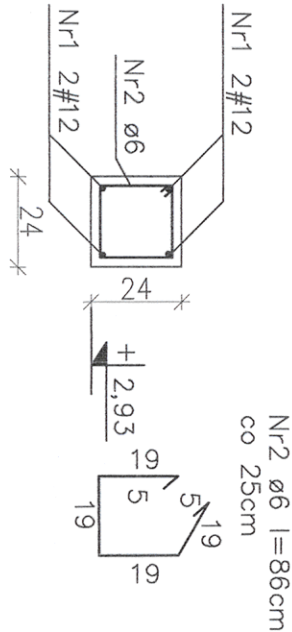
Poz. 2.3. Belka B1



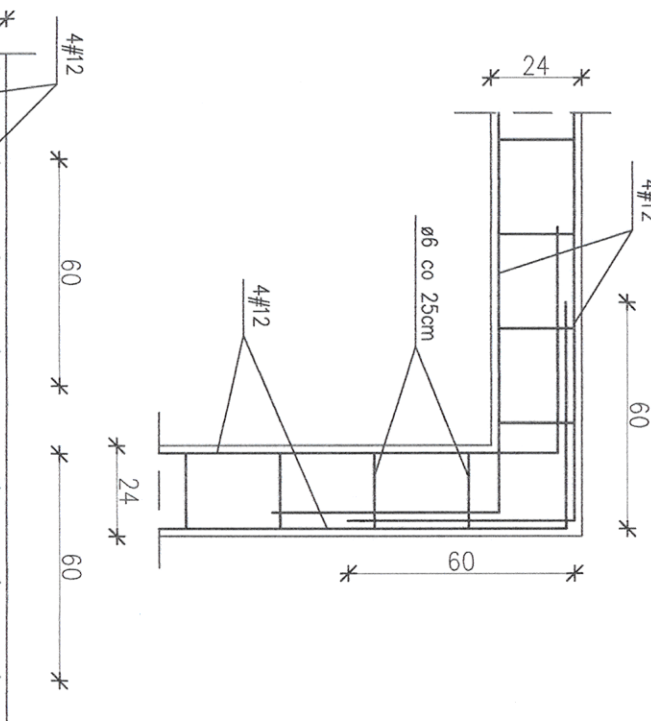
Poz. 2.6. Słupy S1 - 3 sztuki



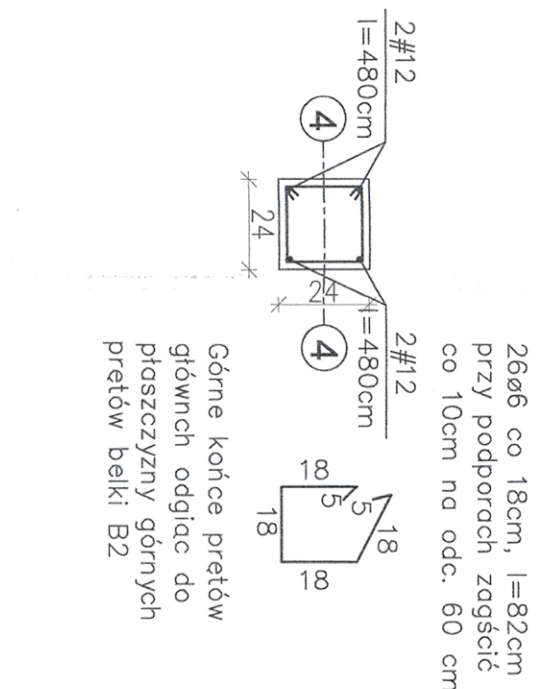
Poz. 2.9. Wieniec W1



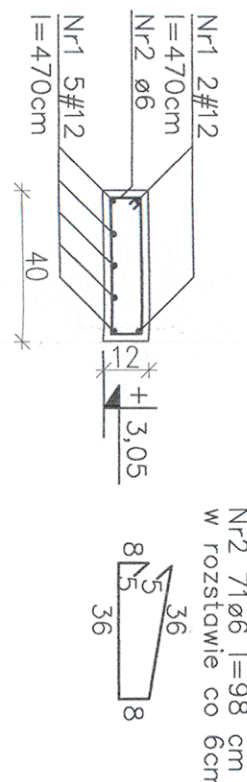
SPOSÓB ZBROJENIA NAROŻY WIENCÓW



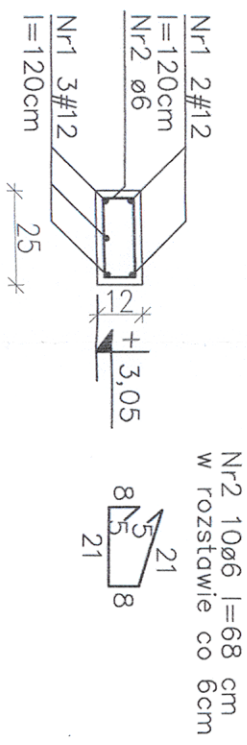
Poz. 2.7. Słupy S2 - 2 sztuki



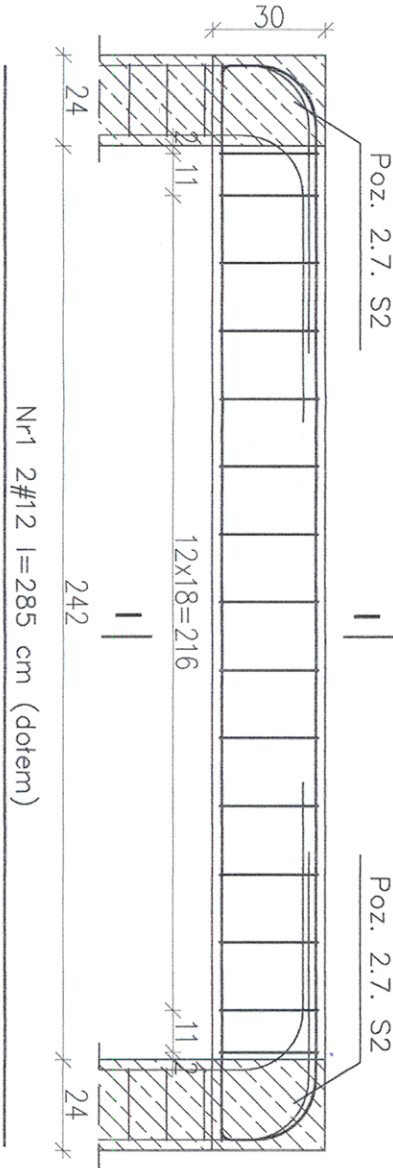
Poz. 2.9. Belka ukryta BU1



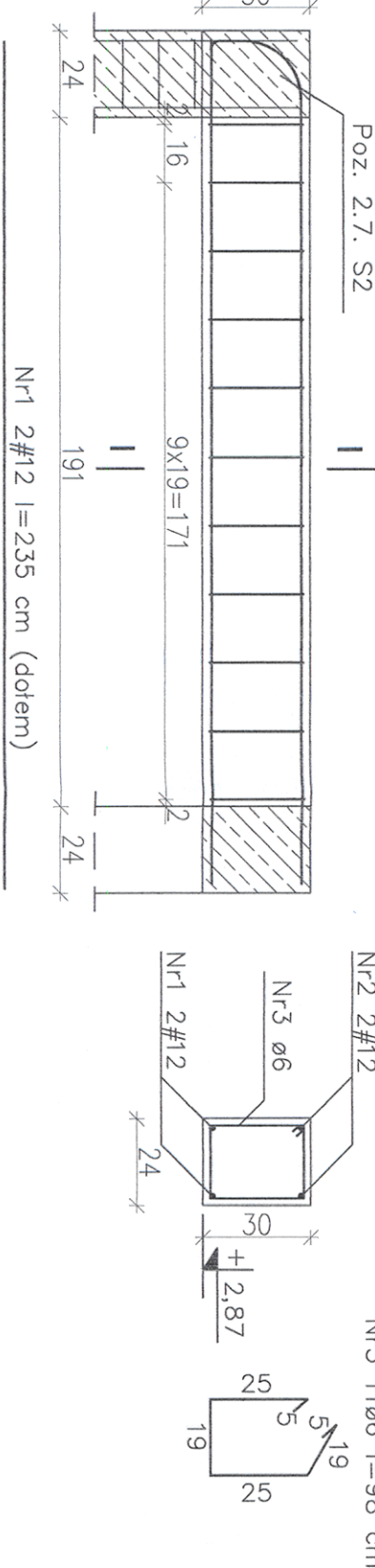
Poz. 2.10. Belki ukryte BU2 - 2 sztuki



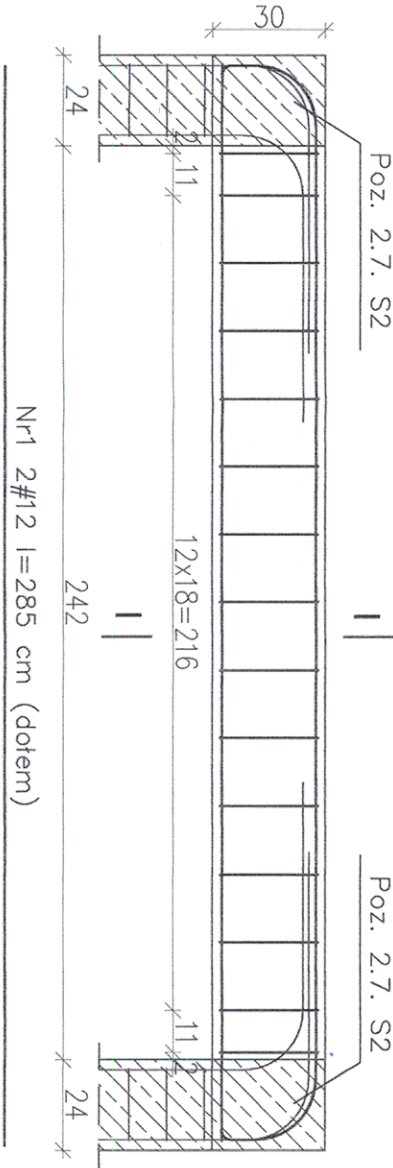
Poz. 2.4. Belka B2



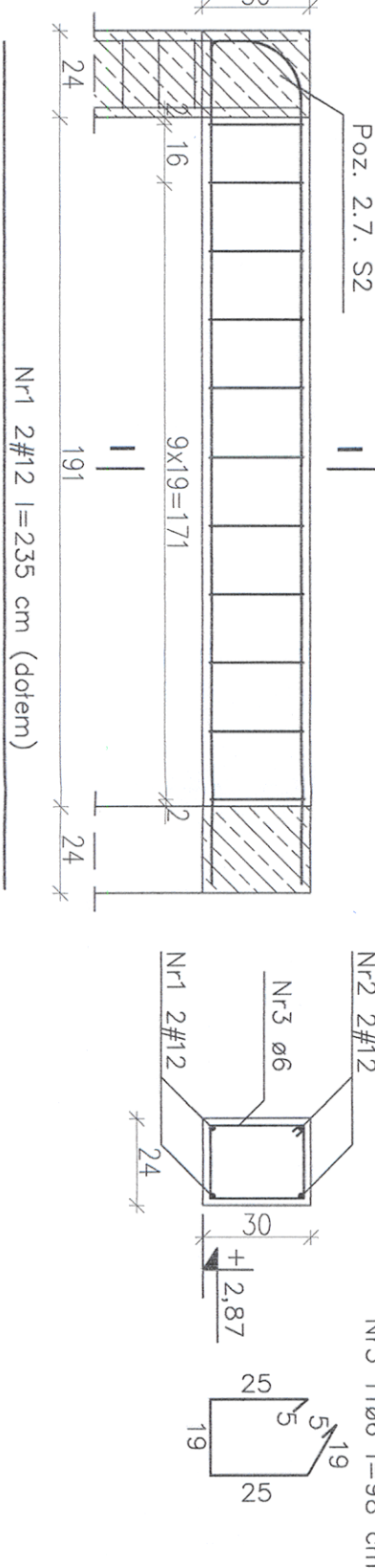
Poz. 2.5. Belki B3 - 2 sztuki



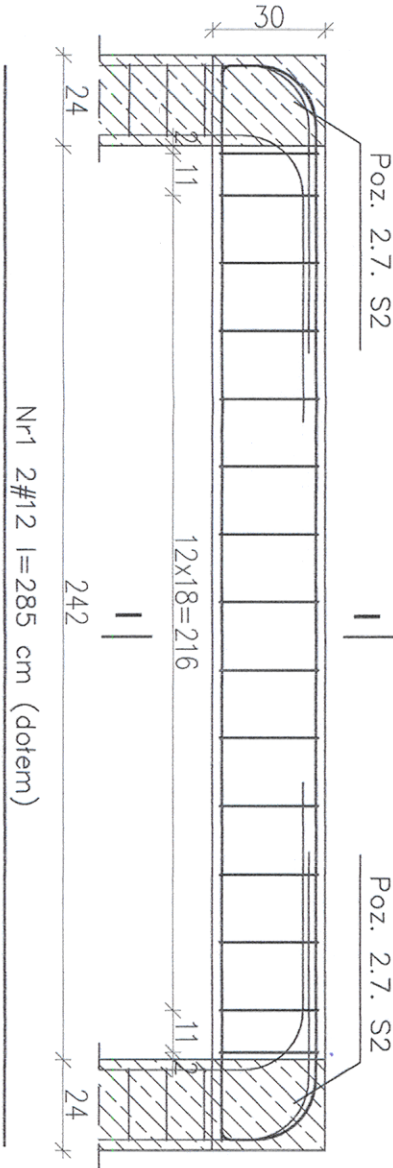
Poz. 2.4. Belka B2



Poz. 2.5. Belki B3 - 2 sztuki



Poz. 2.4. Belka B2



Poz. 2.5. Belki B3 - 2 sztuki

